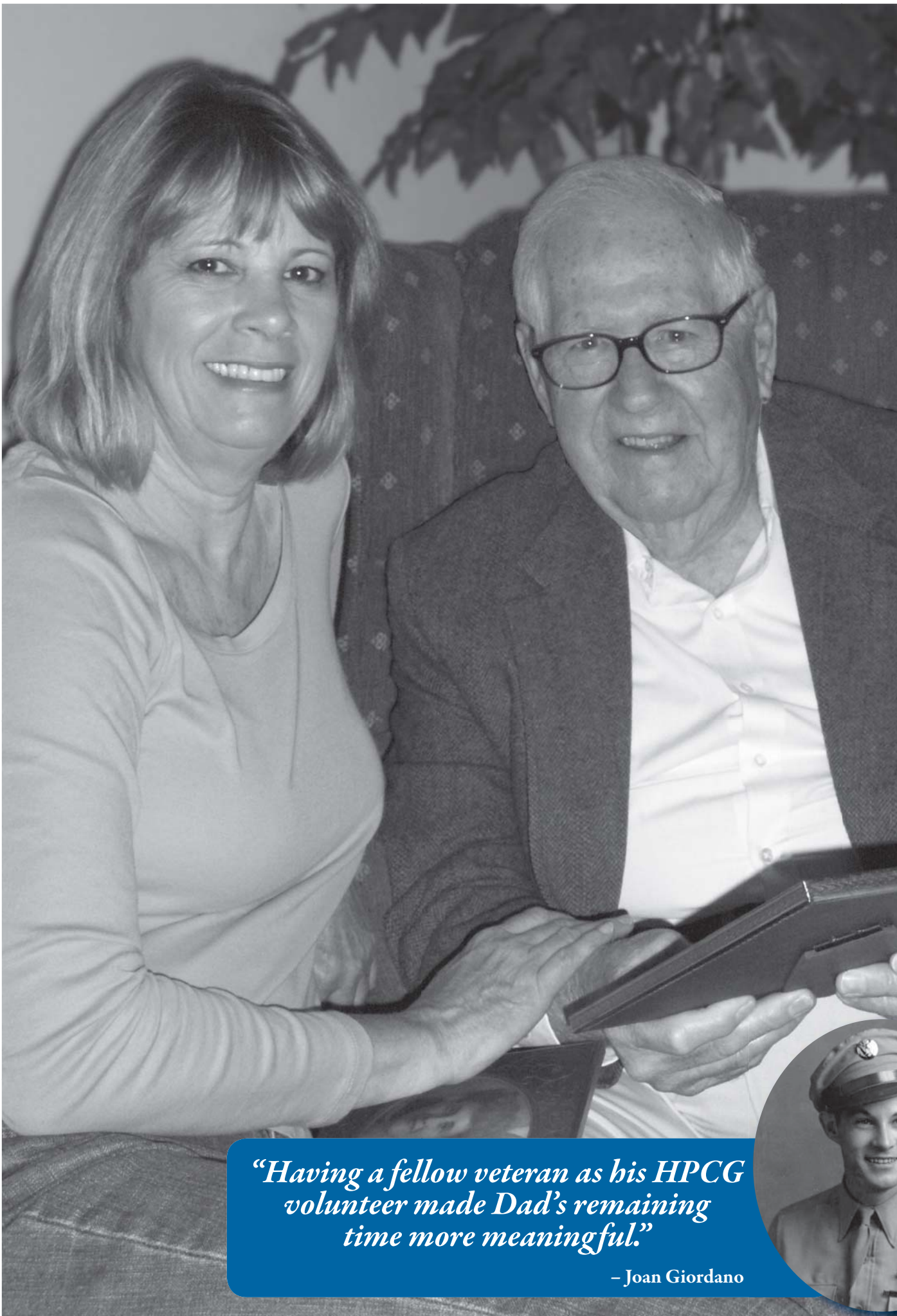


# NEWSLINES



*“Having a fellow veteran as his HPCG volunteer made Dad’s remaining time more meaningful.”*  
– Joan Giordano



## Initiative Enhances HPCG’s Service to Veterans

Some veterans take great pride in their military service, while others painfully question if their sacrifices made a difference. There are those who bear the physical and emotional mark of war and those who feel their service was never appreciated. Others hold horrific memories in silence – their stoicism often concealing the underlying grief that has never been expressed.

“You can never assume what a veteran’s experience has been,” explained HPCG social worker, Anne Batten. “When I first meet a new patient and inquire about their military service, I use active listening techniques to gather information. It’s about letting the patient take the lead and creating a safe, non-judgmental place for stories to unfold.”

Hospice and Palliative Care of Greensboro (HPCG) is dedicated to providing comfort and support at end of life for all patients. Fulfilling this is not a simple task, especially for those who have served in the military.

Some patients, like Paul Goble, are eager to talk about their military experiences; however not all those memories are so easy to discuss. For years, Goble put a lighthearted spin on his WWII stories, when in actuality, he faced many perilous times. After all, he was a flight engineer on 36 B-17 missions, one of which took him behind enemy lines on D-Day.

Goble found comfort in sharing these intimate memories with fellow veteran and HPCG volunteer John Reece. Ironically, both men served in the Army Air Force during the war. “Paul and I hit it off on our very first visit,” said Reece. For over a year, the two men built a relationship

*continued on page 2*

*Joan Giordona reminisces with John Reece, her dad’s HPCG volunteer and WWII veteran*

### Contents

Message from the President and CEO .....	2
Bridgewater Challenge Update .....	3
HPCG Annual Campaign 2011 .....	3
Gifts to HPCG .....	4
Take a Look at Local Fundraisers .....	6
Corks for Kids Path 2011 .....	6
HPCG Calendar of Events.....	8



**HOSPICE and PALLIATIVE CARE of GREENSBORO**  
Hospice • Beacon Place • Kids Path • Counseling and Education Center

# A Message from CEO Pat Soenksen



**WE HEARD YOU...**

As a component of HPCG's 2011 – 2014 HPCG strategic planning process, we gathered community feedback and qualitative input, utilizing a consultant, Ms. Nancy Hunter. She conducted five focus groups and an electronic survey from October - November 2010 with a total of 342 community respondents.

The focus groups were all voluntary. While HPCG staff helped develop lists of potential participants, Ms. Hunter contacted the individuals and invited their participation. No HPCG staff or board members attended or viewed the focus groups. The focus groups included: congregational nurses, African American community members, faith community leaders, Moses Cone Health System clinical staff and local nonprofit leaders. A Latino focus group was not scheduled due to scheduling conflicts but instead, three telephone interviews were conducted. The consultant

observed a high level of participation, very strong engagement, and sharing of very rich data by participants.

Overall, responses were extremely positive about HPCG. Participants easily listed positives but had difficulty thinking of concerns. Many, including those invited in a professional capacity, had used HPCG services personally, and gave very positive feedback. Words frequently used to describe HPCG included: compassion, comfort, love, support, peaceful transition, holistic care.

The following themes emerged: availability and dependability; holistic support and care; individual patient dignity and determination; confusion about hospice eligibility, discharge, and reimbursement parameters; community education and awareness; outreach for diversity; teamwork and partnerships.

Many focus group participants desired more lifelong connections with HPCG, e.g., death isn't the only grief we need help with.

The focus groups also highlighted the challenge of overcoming the sometimes negative emotional connection between HPCG (and hospice care, in general) with death and dying.

*We heard you* and we are responding by developing new outreach, education and marketing strategies to increase awareness of hospice and to position HPCG as the leading community resource to assist with issues of serious illness, death and grief at any time in one's life. Thank you to all community members who gave of their time, providing insightful input for our strategic planning process!

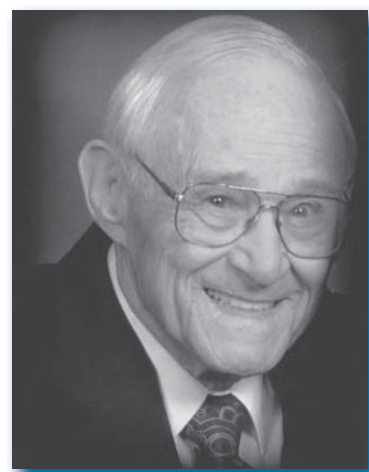
*Pat Soenksen*

## Veterans Initiative

*continued from page 1*

that allowed them to talk about many topics, including some of those darkest times during the war. Each realized that faith, family and love of country had sustained them.

At 96, Goble was in declining health but his memory was sharp. He vividly recalled his years in the Army Air Force as a flight engineer during World War II. "It was like a living history lesson," said Batten. "He was energized to have an eager audience and I found his stories about the war and his long, full life to be very inspirational."



*Paul Goble*

Described as a man who looked on the positive side of everything, Goble loved practical jokes and he loved encouraging others. "My father was an exceptional man," said his daughter Joan Giordano. "Months after his death, I continue to receive notes and calls from people who want to tell me of his kindness – things he did quietly for others. For example, he never left a church service without seeking out the organist and the choir director to offer his appreciation of their music, commenting on something specifically each time."

Before his death, friends held a private concert to honor Goble and his love of music. A variety of songs were played on the organ and the piano, including old hymns and popular tunes from the 1940's. Goble asked to hear "I'll be Seeing You," a song that stirred loving memories of his late wife, Glenna. Married for over 60 years, Goble recalled how her love and the promise of the life they would have together provided great encouragement during the long war years.

"It was such a privilege to have my father live with me the last year of his life," said Giordano. "He never complained, despite the limitations of his declining health. He got up every morning and gazed out the window and declared, 'Another beautiful day!' Of course, the outstanding care and support Dad had from HPCG contributed to his positive outlook too. He always looked forward to their visits, as I did. And in the middle of the night if Dad was short of breath, I could hear the nurse's calming voice instructing me."

Since her father's death, Giordano and her brother have traded stories, each learning something new from the other – like how their father recited the words to the hymn "Never Alone" in times of great fear during the war.

*"The world's fierce winds are blowing, temptation sharp and keen.  
I have a peace in knowing my Savior stands between  
He stands to shield me from danger when my friends are all gone.  
He promised never to leave me, never to leave me alone!"*

"The day before Dad died, John (Reece) brought us a homemade angel food cake. Dad joked that he wasn't sure he was worthy of a cake by such a name. We all had a good laugh, but deep down I know Dad was at peace with the way he had lived his life.

*Paul Goble served in the 8th Air Force of the Army Air Force as a flight engineer on B17's, completing 36 missions. He served in Europe, Africa and the Middle East, and was awarded the Air Medal, 3 Oak Leaf Clusters and 2 Bronze Stars.*

## We Honor Veterans

*"Without witness they will disappear."*

*Deborah Grassman, author of Peace at Last*

To further enhance end-of-life care to veterans, Hospice and Palliative Care of Greensboro (HPCG) has joined a national initiative entitled, "We Honor Veterans." Organized by the National Hospice and Palliative Care Association and the Veterans Administration, this initiative partners with local hospices like HPCG to provide additional resources for staff and volunteers caring for veterans.



*Pat Gibbons*

"This kind of focused attention on veteran's end-of-life needs is long over due," explained Pat Gibbons, co-chair of HPCG's Veterans Initiative. "These new tools have encouraged HPCG to make some meaningful program changes," Gibbons continued. "And of primary importance is the increased awareness and sensitivity of HPCG staff and volunteers as they explore the needs of patients who are veterans."

"Understanding how veterans view their service, whether it is positive or negative, has implications on how they react to declining health and impending death," said Gibbons. "To bear witness to a veteran's story is a privilege and an honor. But, it takes a team of staff and volunteers to do it well."



**WE HONOR VETERANS**

*Hospice Professionals on a Mission to Serve*

### Remember Memorial Day 2011

Memorial Day commemorates the men and women who died while serving their countries in the military.

Designated by Congress as a national holiday in 1971, Memorial Day is observed on the last Monday of May. HPCG encourages you to remember those friends and family members who lost their lives in military service. Sharing stories and remembering is a meaningful way to celebrate.

## You can make your generosity permanent

### Did you know?

The impact your charitable giving has on HPCG can last beyond your lifetime?

It can, if you endow your annual gifts through a bequest. Invested prudently in our permanent endowment, your bequest will earn income every year. This income will be used to continue the support that you are providing us now – permanently.

Bequests are a satisfying, foresighted gift, and they are easy to set up. We'll be happy to give you more information.

Not intended as legal, tax, or investment advice.

Contact Paul J. Russ, CFRE MFA  
Vice President of Marketing and Development  
336.478.2502  
PRuss@hospicegso.org

# Bridgewater Challenge Update

The Bridgewater Foundation awarded a challenge grant to support HPCG's Endowment for Nursing Excellence and Beacon Place renovation projects last November. The "challenge" was for HPCG to raise an additional \$250,000 in donations for either of the two projects by May 31, 2011. The Bridgewater Foundation will match the funds raised - dollar-for-dollar – up to \$250,000.

"This challenge has been a tremendous asset to our campaign projects," said Pat Soenksen, President and CEO. "The Bridgewater Foundation's challenge brought new energy to our efforts. We have received support from many donors who had not given since the mid-1990's, as well as from new donors who simply wanted to help us meet this challenge."

To meet the challenge, HPCG's Resource Development program employed several strategies to reach a variety of donors which began with an appeal to the board of directors led by Immediate Past Board Chair Larry Roland. Alan Cone, who co-chaired the initial Beacon Place capital campaign, led a direct mail solicitation to re-engage Beacon Place donors, and Dr. Patrick E. Wright led a physician-targeted effort. In addition, the agency used email, its agency newsletter and social media to spread the news.

"This campaign effort has been a wonderful success, but we still have a ways to go to maximize the benefit of this challenge for HPCG," said Paul Russ, Vice President of Marketing and Development. "The Bridgewater Foundation took a leadership position in giving and encouraged all of us to stretch to meet the challenge. We are very grateful and the outcomes speak for themselves."

### Help HPCG meet the challenge!

Use the enclosed reply envelope to make a gift today and help HPCG meet the Bridgewater Foundation challenge!

## Annual Support Makes HPCG Programs Possible

Hospice and Palliative Care of Greensboro (HPCG) will launch its 2011 Annual Campaign this May. Longtime supporters and community volunteers Madeline and Everette Mills will lead the effort.

"Annual support is crucial because while most HPCG services are reimbursed by Medicare, Medicaid and private insurance, many important programs have little or no funding sources," said Everette Mills. "For example, care for the indigent, services for grieving and medically fragile children, and bereavement counseling for adults are all vulnerable without philanthropic dollars."

In fact, each year HPCG must raise between \$500,000 - \$1 million to provide these services to the community. The Annual Campaign represents 25% of the funding needed. The remainder is generated through major gifts, special events, memorial giving and United Way support.

These services, which are beyond basic hospice care, are an expression of HPCG's mission to enhance quality of life by providing expert interdisciplinary care, consultation, support, and education for those affected by serious illness, death, or grief. HPCG's board and staff believe in meeting the unique needs of the community, and to date, because of strong community support, no one has ever been denied care because of an inability to pay.

The Mills are long-time supporters of HPCG and Everette currently serves on the Board of Directors. He has had several family members who have benefited from HPCG patient care. Together, this generous couple has supported a variety of charitable causes with their volunteerism and gifts, including the arts, education, religion, and health and human service programs.

"HPCG staff members are the most caring people you'll ever meet anywhere," said Everette Mills. "From the top down to the bottom up, this is a very well run organization. When we were asked to chair this campaign, we realized it was not only something we needed to do, but something we should do."

Last year, the late Dr. John A. Lusk, III and his wife Barbara Lusk chaired HPCG's 2010 Annual Campaign. In their appeal, Dr. Lusk shared his passion for the work of HPCG, his pride in its evolution over its 30 year history, and the need to continue to educate the community about the value of hospice care.

"Hospice care continues to inspire me because it deals with the whole patient, not just their disease," wrote Dr. Lusk. "While we have made progress, many still struggle to talk about issues related to serious illness and death. Therefore, we must continue to provide information, guidance, as well as compassionate care not only to patients, but to their family members. Your support will help us continue this work."

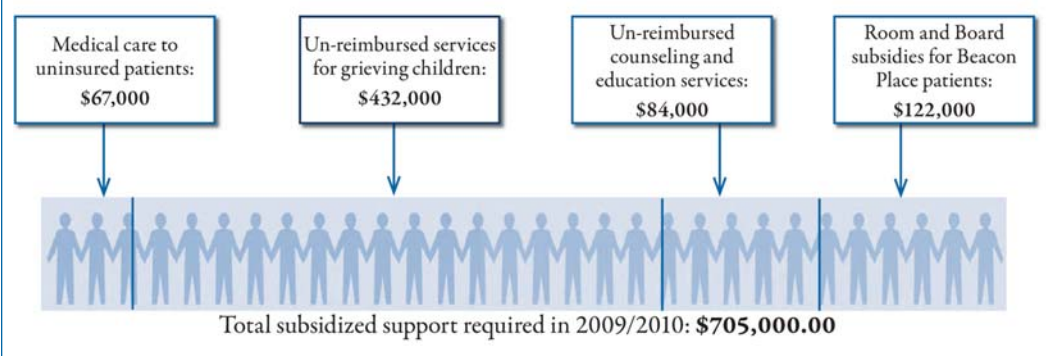
Dr. John Lusk died on June 9, 2010 shortly after launching the 2010 Annual Campaign. While he is greatly missed, we are confident he would have been proud of the community's response to the 2010 Annual campaign which raised more than \$197,000 for HPCG's operations.

HPCG is grateful to all our 2010 Annual Campaign donors who demonstrated - in a very tangible way - that the work of HPCG is valued. Because of generous annual support, HPCG continues to dramatically affect the lives of individuals in our community.



Everette and Madeline Mills

### IN 2009-2010, PUBLIC SUPPORT ALLOWED HPCG TO PROVIDE:



# Gifts to Hospice & Palliative Care of Greensboro January 2011 - March 2011

## Honorariums

Carolyn and Bob Banks  
 Bonnie and Jimmy Black  
 Diane and Mike Boger  
 Wyenita Alston  
 Sally and Ken Anderson  
 Dr. Shane Anderson  
 Jerry & Carol Ashbaugh  
 Karen B. Bagley  
 Dr. James Beckman  
 Beckie Berlin  
 Gail Boulton  
 Joyce Brown  
 Willa Brown  
 Gullanar Campbell  
 Linda Carraway  
 Jim & Jonni Catlett  
 Kay and Ed Chesnutt  
 Regina Clark  
 Kris and David Cooke  
 Penny Demetriades and  
 Su Peterson  
 Ruth Doggett  
 Susan and Bob Douglas  
 Alice and Mike Gaines  
 Philip and Joe Gelzer  
 Jane Gibson  
 Emily and Billy Hall  
 Risa Hanau  
 Dr. William F. Hopper  
 Gail and Ken Huggins  
 Angel Jenkins-Galbreath  
 Millie and Tommy Johnson  
 Kay Jones  
 Phyllis Jones  
 Judy and Bubba Judy  
 Carleen and Roger Kilpatrick  
 Carol and Jim Long  
 Monica Lonon  
 Anne Lucado and Family  
 Seattle Mantooth  
 Jane and Steve Mascia  
 Bridget Macpherson and Dick  
 Maxwell  
 Sherry and Joe Marus  
 Misty McCall  
 Mother of Todd Moore  
 Hallie Morton  
 Frank and Sylvia Moulton  
 Kelsi, Myles and Devon Oliver  
 Mary and Bob Plybon  
 Anita D. Prysby  
 Cindy Jarrett-Pulliam  
 Anne and Bob Rodman  
 Larry Roland  
 Millie and Bill Ronemus  
 Senn Dunn Associates  
 Karl Sherrill  
 Jackie and Mike Sigmon  
 Pat Soenksen  
 Andrea Summers  
 Luke Sumpter  
 Amy Taylor  
 Sarah Turner  
 Marti and Robin Tyler  
 Susan and Larry Tysinger  
 Sylvia and Richard Vanore  
 Lou Wallace  
 Pam and Randy Warren  
 BooBoo and Tommy Watkins  
 Fred Youngman, Jr.  
 Dr. John Zieminski

## Memorials

Grace Ann  
 Gwen  
 Sandi  
 Mickey Abernathy  
 Edward Jenner Allred  
 Marie V. Allred  
 Wanda Ingold Amick  
 Earl Kenneth "Ken" Anderson  
 David Ray Bozovich  
 Bert Brady  
 Lindy Brady  
 Richard Arlin Bridges  
 Judithe Bald Briggs  
 Ruth Dixon Brittain  
 Jessie Hardin Brookbank  
 John C. Brooks, Jr.

Cecil Church  
 Debra "Debbie" Kimbro Cirba  
 Carolyn F. Clapp  
 Mildred Magdalene D. Clapp  
 Martha Ruth (Marshie) Mitchell  
 Clark  
 Isolind DeBoe Clarke  
 John K. Cobb  
 Bryce Wynburn Cobia  
 Paul Andrew "Drew" Cole, Jr.  
 Edward Otto "Robert" Coleman,  
 Jr.  
 Betty Louise McBride Collins  
 Herman Cone, Jr.  
 Robert D. Cooke  
 William Owen Cooke  
 Dorothy "Dottie" Cooper  
 Rev. Robert Corpening  
 Robert L. Costello  
 Evelyn S. Cottrill  
 Mark Thomas Crabtree  
 Rachel S. Crabtree  
 William Hugh "Bill" Craft, Sr.  
 Elinor "Ellie" P. Craig  
 Dick Ross Cranford  
 John Gerald "Jerry" Cranford  
 Cam Criddlebaugh  
 Edward Cameron "Cam"  
 Criddlebaugh  
 Timothy "Tim" Lane Crouse  
 Judy Garland Crowder  
 James B. Curl, Jr.  
 Frances D'Alessandro  
 Patricia Johnson Danieley  
 Vi Davidson  
 Juliet Halliburton Burnett Davis  
 Dr. Junius Weeks Davis, Jr.  
 Mable Elaine Venable Dawson  
 Catherine Dean  
 Betty Touchstone Deaton  
 Marguerita Pegram DeHart  
 James Allen Dick, Sr.  
 Charlotte Wickey Diehl  
 Anna Wolff Dixon  
 Carylon Billings Dockery  
 Ruby Mae Gourley Donnell  
 Ann Linville Dorn  
 Hazel Robbins Dorsett  
 Lacy P. Dumas  
 Thelma Walker Dunman  
 John C. Eason  
 Mary Jo Whitted Elmore  
 Kelly H. Epperly  
 Allen Wilburn "Bill" Everhart  
 Eugene Cannon Few, Jr.  
 Thomas Pierce "Tom" Few  
 Martha Lena Fields  
 Ruth H. Fine  
 Jessie Fitzgerald  
 Adam Flippin  
 James "Jim" Bowie Foster, Jr.  
 Druscilla P. Francisco  
 Herman Bryce Frazier  
 Eleanor Dalton Singletary Friday  
 Dorothy M. "Dottie" Fulmer  
 Norris E. Galloway  
 John Sterling Gates, II  
 Edna McIver Gerringer  
 Francis Benjamin Gibbs  
 Della M. Gibson  
 Joyce Gilkinson  
 Larry Charles Goad  
 Paul J. Goble

## Commemorative Brick Program



*Mary Susan Ross and her grandchildren at the 2009 Brick Blessing*



Mary Susan Ross shared... "After my husband, Bobby Ross, died, I purchased a brick paver in his memory. Since the date of the Brick Blessing fell a few weeks past the one-year anniversary of Bobby's death, I decided to invite our family and a few close friends to join me at the dedication. The service itself was both meaningful and uplifting, and the day was glorious, right down to the cloudless "Carolina Blue" sky. After the difficult year, it felt so good to celebrate Bobby...my heart!"

### Create a lasting tribute with an HPCG Commemorative Brick.

For information about how you can purchase an HPCG commemorative brick, please contact Mary Anderson at 336.621.2500 or [manderson@hospicegso.org](mailto:manderson@hospicegso.org). Information is also available on our website: [www.hospicegso.org](http://www.hospicegso.org).

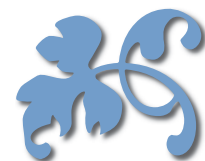
**Deadline: August 31, 2011**

Margaret Pugh Anderson  
 Trudy Mabe Anderson  
 Wiley B. Andrews, Jr.  
 Kay Wrenn Armstrong  
 Alba Bradley Bailey  
 Jaenn C. Bailey  
 Ray Anthony Baldwin, Jr.  
 Marie B. Barham  
 Juanita Blevins Barr  
 Bobby Dean Beal  
 Margaret M. Ardrey Bell  
 Ruth Fenell Benton  
 Jane Forrest Berckman  
 Philis Ann Bird  
 Kim Wayne Biser  
 Brittany Blanchard  
 Teresa Rohan Blievernicht  
 Judith Ingram Bohrer  
 Rebecca Elliott Boyer

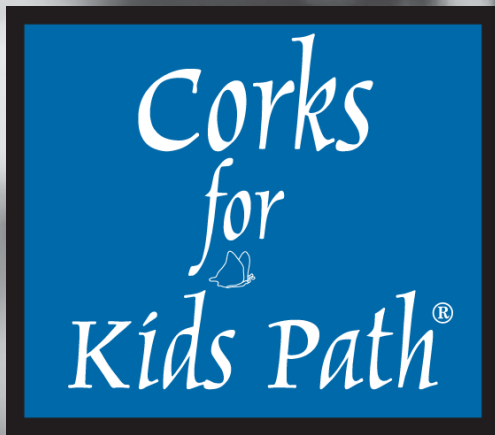
Robert Brower  
 Arzy Lee Brown  
 Ralph Brown  
 Virginia H. Brown  
 Tina Johns Bunton  
 Louis Edward Burch, Jr.  
 Elizabeth Ratliff Burks  
 Frank B. Burns  
 Ernest Patrick Cain, Jr.  
 Franklin "Frank" Marshall  
 Campbell  
 William Davis "Bill" Campbell  
 Agnes Jones Carpenter  
 H. W. "Bud" Carpenter  
 Patrick "Pat" Frank Carroll  
 Fullam Howard "Sonny" Cashion  
 Margaret Beverly Cassell  
 Ervin Chambers  
 James L. "Lindy" Chester

# Gifts to Hospice & Palliative Care of Greensboro January 2011 - March 2011

Richard "Dick" Lee Goke	William "Dennis" Kinne	Blanche M. O'Ferrell	Hal Hazelton Strickland, Jr.
Ethel Southard Gossett	Thelma Mabe Brooks Kinney	Raymond O'Ferrell	Charles Spencer "Spence" Sullivan
George A. Graham	Charles "Charlie" Calvin Kirkman	Celia Moore O'Neal	Myrtie B. Sullivan
Peggy Caruthers Grainger	Jacoba Klaassen	Dorothy "Mama Dot" Mae	Emerson E. "Gene" Surbey
Brandon Eugene Granger	Sandra "Sandy" Krick	Leonard Oates	Julius W. "Cotton" Surratt
Joyce Grant	Wynson "Winnie" M. Lamoureux	Fred Jackson Oates	Carrie Beth Hunt Suttles
Corrine C. Gregory	Betty Lang	James "Jim" W. Olson	Robert "Bob" Eugene Swaim
Ernest "Jack" Coley Grissom	Eleanor M. Lapp	Brenda Carolyn Parker	Roland Arthur "Bud" Swanson
Marvin Eugene "Gene" Groome	Frederick B. Lapp	Billy Michael Parrish, Sr.	Dr. A. Raymond "Ray"
Edna Wheat Grubbs	Cynthia M. Vazquez Lauer	Margie H. Parrish	Tannenbaum
Robert Donald Gunter	Dorothy "Dot" Gray Leggett	Johnny Garrett Parrish, Sr.	Angelo Antony "Buddy" Tarallo,
Brenda Fountain Gutschmit	Donnie T. Lewis	Earl Zilbert Paschal	Jr.
R. Phillip Hanes, Jr.	James E. Lineberry	Caroline M. Pearce	Lois Bowen Taylor
Sylvia F. Harden	Richard A. "Dick" Little, Jr.	Joseph "Joe" W. Pearce	Laura Lee Beal Tebbetts
Wallace C. "Wally" Harrelson	Dorothy Ann Calhoun Lloyd	Ruth Gilbert Pearman	Andrew Thompson, III
John Harris	Ina Mae Bellamy Loflin	James Rennie Perrin	Iris Baynes Tilley
Harlow Rose Harrison	W. Ernest "Red" Loman	Dolly O'Neal Perry	James Ralph Tippet
Margie D. Haven	Esther Ruth Calhoun Lucas	Harland Phillips	Hilda Smith Tussey
Myrnell B. Haynes	Ida L. "Holly" Lucas	Monroe Picard	Glenda Tysinger
Linda Joyce Hedrick	Dr. John Alexander Lusk, III	Louise "Lou" Fuller Pierce	Charles H. Valentine
Pauline Violet Hackett Hedrick	Marcia Anne Macdonald	Robert Charles "Bob" Postels	Martha Joyce Ross Wade
William and Pauline Hedrick	Louise Sadle MacIntosh	Audrey Whitaker Price	George Hayes Wakefield
Edmond "Ed" M. Heelan	Carole Malerk	Cheryl Quinn	Elizabeth "Beth" Yager Walton
Elsie Mae McNeill Hester	Evelyn Dorothy Mangeot	Kendall Ralph	Minnie Sue Ward
Dale Clifton Hewitt	Seattle B. Mantooth	John Peter Rascoe	Robert Samuel Weathers
Arthur Newcomb Hicks	Marion Mattmuller Marschall	Grace Kingston Reed	Judith "Judy" C. Weaver
William Marcus "Mark" Hicks	Daniel "Dan" Reece Marshall	Altin Rawley Reynolds	Louise Weisberg
Beatrice "Bea" Elizabeth Causey	Edna Hatcher "Elna" Martin	Margie Marie Richey	Helen Welborn
Highfill	Susan Gail Martin	Guy & Lillie F. Riddle	William F. "Bill" Welborn
Pamela "Pam" Metcalf Highsmith	Marty, Terri's Friend	George Toliver Roberts, Jr.	Ann Marie O'Neil Wells
Ray Hill	Harold Dean Matheson	Jaye V. Robinson	Mary Elizabeth Turner Whicker
Frances O. Faucette Hilliard	Dan Matthews	Clyde Thomas Rollins, Sr.	Roger White
James "John" Franklin Hilliard	Clara Emily Brann May	Syreta "Rita" Rothrock	Ruth Allie Reynolds White
Earline Crain Hodge	Edna B. May	Dr. William Thomas "Tom" Rowe	John Ben Wicker
Gernie Mayo Holland	Marvin Carter May, Sr.	Jess Rudiger	Bertha Arnold Williams
Elizabeth Haworth Holmes	Clyde James McCaskill	Dorothy "Dot" Bolejack Rumley	Essie Elizabeth Brittain Williams
Nancy P. Holt	Ruth T. McCaskill	Nancy Jane Simpson Ruple	Frances "Frankie" Brewer Williams
Joe E. Hooks	Peggy Claire Rosser McCormick	Julia Angel "Snookie" Sauls	William "Bill" Walter Williams
Farisa M. Horton	Mary E. Hall McCoy	Samuel William Sawyer	Gordon Churchill Willis
George Harrison Howell	F. Lucille Hyde McCracken	Homer F. "Fritz" Schroeder	Seren Virginia Windley
Leona Hubbard	Robert William McCuiston	Crawford A. Self, Jr.	Julia C. Windsor
Rosa Lee Huffman	Annie Christian "Christene"	Gerald "Jerry" M. Shaver	Phyllis Williams Winslow
Rev. Dr. James "Jim" Ernest Hull	McGimpsey McDonald	Eva M. Shelton	Charles "Chuck" Woellner
Carleen M. Hunsucker	Marian Frances Dawson Pepin	George Shelton	Barney Wood
Janice Lynn Hunt	McDonald	Faye Almond Shepherd	Ruth Ann Wood
Thomas "Tom" Hunter	Judy Wiles McDowell	Scott Allan Sholar	Ruby Vernon Greene Wortham
Mary Elinor Davis Crawford	Charles McFarland	Millicent C. Sims	Inez S. Wright
Huntley	Clarence Marvin McGill	Gerald Otto Singer	Dr. Kieth Carter Wright
Gary Gene Hurley, Sr.	Harry "Joe" Clayton McIntyre	Ava "Polly" Thomas Smith	William "Bill" Nickey Wright
Bertha Speer Hylton	Evelyn Braswell McKeel	Grace Friddle Smith	Gregory Wayne Wyrick
Connie Lewis Inman	Sarah Louise Moore McMichael	John McNeill Smith	Jerry Wallace Wyrick
Mary Catherine Scott James	Mary Russell "Ducky" McNeal	Joseph Harold Smith	Sandra Eller Wyrick
Dru Richard Jarrett	Mary Moira McQuade	Josephine R. Smith	Phillip Young
Rachel Elizabeth Kivett Jessup	Marvin Everett "Si" McRae	Mary Lynn Stevens Smith	Fred William Youngman, Sr.
Brenda K. Johnson	Jon Wade Meadows	Donald Charles Snider, Jr.	Guiseppe Zanardo
Muriel Sampson Johnson	James L. Medley	Jessie Robert Snow	Albert "Al" Marshall Zigler
Patricia "Pat" Gordon Johnson	Rita Medoff	Margaret R. Snow	
Peggy H. Johnson	Janet S. Merritt	Grace Soenksen	
Edith Jackson "Edie" Jones	Marjorie Farrior Milam	Darrell Martin "Marty" Southard	
Elizabeth "Lib" Wilson Jones	Everett Alan Miles	Dorothy Groenendale Spencer	
Gertrude G. Jones	Pauline M. Moldovan	Jennifer Ann Sproles	
Herbert R. Jones, Jr.	Joseph "Joe" Cannon Moore	Shirley Faye Stafford	
Carl Michael Jordan, Sr.	Kenneth "Kenney" Ray Moore	George Carroll Starkey	
Margaret Wright Jumpe	Barbara Boyle Mooth	Paul William Stephanz	
Harriet Simon Kabat	Edna B. Morphis	Onda O. Stevens	
Caroline Kanarek	Janet Thomas Morris	William "Boone" Stevens, Sr.	
Judith L. Blakeley Kelley	Helen Mullaly	Dorothy Evans Stewart	
Lee Boone Kennett, Jr.	Ruth K. Nesbitt	Leonora "Lee" Fulp Stewart	
Virginia "Jennie" Sink Busch Kent	"Chick" Newman	Robert Lee "Bob" Stewart	
Isabel Gladden Key	Fred M. Newnam	Fairy Davis Strader	
Lynn Harts King	Eleanor P. Nolte	Betty Peacock Strickland	



Every effort has been made to include and correctly list all the names of persons honored or remembered since our last issue of NewsLines. This list represents those tributes received between January 1, 2011 and March 31, 2011. If we have made an error, we hope you will give us an opportunity to correct our mistake in our next issue. Please call the Resource Development Department at 336.621.2500.



## Corks for Kids Path: Celebrating 4 Years of Success!

What a night! On February 25th, more than 550 people came together in support of Kids Path for the 4th Annual Corks for Kids Path, generating more than \$60,000 (net) for Kids Path services – *doubling previous years' annual totals* and bringing its 4-year net total to more than \$160,000!

This year, guests enjoyed valet parking at the Regency Room, a special lounge for sponsors, and a fun new way to bid on auction items using an electronic, handheld device called a BidPal. Our auction bids and proceeds doubled! And our guests told us this was the best Corks for Kids Path yet!

### Some feedback from attendees included:

- *The tone of the evening was festive and fun. There were so many people yet it never seemed crowded and there was always something to do. Taste wine, play with the BidPal and look at the auction items, eat, socialize. The Sponsor Lounge was hip and decadent and made the event that much more chic! Food was fabulous, best ever! This event is an incredible value for the cost!*
- *Valet Parking was great!*
- *This event gets better every year!*
- *The food was excellent!*
- *I enjoyed the presentation. It brought tears to my eyes and all of the items you had to bid on – they were great choices!*

As they say, "It takes a village!" Under the amazing leadership of our event chair Misty McCall and her vice-chair Matt Logan: 63 individuals heeded the call to become Host Sponsors for the event; 44 HPCG volunteers provided 207.5 hours of service to help staff Corks for Kids Path; 95 generous donors provided items for our silent auction; and 42 sponsors added more than \$50,000 towards the event's financial success!

Check out more photos by Weezie B. Photography at [www.corksforkidspath.org](http://www.corksforkidspath.org).



## Look at Some of the Ways Greensboro Helps HPCG

### Olivia's Birthday Valentine Dance

When it came time to celebrate her 8th birthday, Olivia Hochrein decided she wanted to do something a little different. She planned a Birthday Valentine Dance and asked that guests bring items for Kids Path instead of birthday presents. Included in the party were the students in Olivia's 3rd grade class at Jesse Wharton, as well as members of her scout troop and several neighborhood friends.

Olivia first learned about Kids Path when the puppet show, "Aarvy Aardvark Finds Hope," was presented to her school class. The story teaches the importance of expressing the big feelings that accompany uncertainty, loss and change. Olivia shared with her family that she most especially liked the message shared by Aarvy's best friend, Ralphy. Even though Aarvy was grumpy at times, Ralphy was a patient, thoughtful friend – even when others were not.



Olivia Hochrein

To prepare for the party, Olivia and her mother toured Kids Path, learning more about its services and needs. It was decided that guests could bring snack items and treasure chest prizes for those children accessing Kids Path grief counseling after school. Special thanks to Olivia and all her guests for supporting Kids Path in this unique way.



Partygoers at Olivia's Birthday Valentine Dance



## 2011 Corks for Kids Path Sponsors

### CABERNET Sponsors

Genuity Concepts  
Natty Greene's  
Pepper Moon Catering  
Domus Ventures  
Zeto

### MERLOT Sponsors

Blue Ridge Companies  
Bradshaw Orrell Interiors  
Clear Defense  
First Citizens Bank  
Donna & David Griffin  
Lincoln Financial Group  
Loco for Coco  
Moses Cone Health System

### SHIRAZ Sponsors

Advanced Technology, Inc.  
Sally & Ken Anderson  
Brady Trane  
Figaro Salon/Phyto  
Eva Jane Gorrell  
Hardin's Florist Supply  
Lofin Financial Group  
Opoulos + Holmes Wealth Management  
Replacements, Ltd.  
Signature Property Group  
Sunbrella  
VF Corporation  
Weezie B Photography

### CHARDONAY Sponsors

Advanced Home Care  
Bayada Nurses  
Bill Black Cadillac  
Charlotte & Chip Chatlain  
BC Cone  
Craft Insurance Center  
Creative World  
Executive Financial  
Ron Johnson & Bones Roane  
Lankford Protective Services, Inc.  
Cindy Jarrett-Pulliam & Larry Pulliam  
Sharon & Bud Turcot  
Well•Spring  
Joe Wheelless  
Beverly & Pat Wright

## 2011 Corks for Kids Path Hosts

Jonathan Baynes	Kathy Haines	Elizabeth & Kevin Smith
Mary & Jeff Beach	Risa Hanau	Pat & Gordon Soenksen
Beth Boulton & Holt Gwyn	Ross Harris	Dallas & Chris Stanley
Lindsay & Fred Carlson	Kim & Worth Holleman	Leigh & Craig Sudbrink
Griselda & Preston Clark	Karen & Shane Kelly	Marion & David Taylor
B.J. & Rod Cooper	Jenn & Joe Kilpatrick	Deana & Chuck Truby
Susan & Bob Cox	Evan & Matt Logan	Liz Urquhart & Powell Slaughter
Meghan & Paul Davis	Misty McCall	Katie & Chris Wangelin
Doug DeLieto	Donna & Bob Newton	Kate & Steven Weaver
Dr. & Mrs. Donald J. Digby	Sarah Poole	John Whisnant
Bethany & Nathan Duggins	Paul Russ & Lynn Wooten	Margaret & Don White
Kim & Erick Ellsweig	Betsy & Ernie Schiller	Ellen & Robert Worth
Diane & Ed Gaines	Sue & Sammy Sciabarrasi	

## Spring is in Bloom

Spring bulbs are popping out of the ground everywhere on our grounds, thanks to the diligent planting by volunteers from the ACC office, Syngenta and Convatec. Last fall they dug many, many holes to plant 1,000 grape hyacinth bulbs along with other spring bloomers. Months later, all who visit are reaping the benefits of their beauty.

If your club or organization would like to tour the HPCG gardens and learn about the healing power of nature, please contact Sally Cobb, HPCG's Horticultural Therapist at 544-2289 or scobb@hospicegso.org.

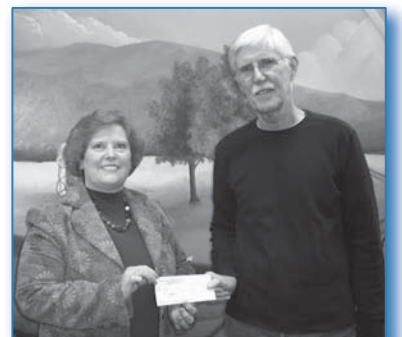


Members of the ACC working on the HPCG campus.

## A Special Kind of Gift Giving

The Ancient Order of Hiberians (Guilford County's Na Cara Division) donated \$500 to HPCG from their 2010 "Trip to Ireland" raffle. Proceeds from their annual raffles are shared with 20 local and national organizations.

The Ancient Order of Hiberians is a Catholic, Irish American Fraternal Organization founded in New York City in 1836. They seek to foster and preserve Irish culture through food, dance, music and sports, as well as provide charitable donations and support to organizations impacting each division's membership.



Morgan Ryan (right) of the Ancient Order of the Hiberians, presenting a check to HPCG.

## HPCG QUICK FACTS

A common myth is that hospice care is only for cancer patients. Actually, any patient with an end stage diagnosis can benefit from HPCG care, including HIV, kidney disease, heart disease and Alzheimer's. In fact, cancer comprised 42% of primary diagnoses for HPCG admitted patients versus 58% for non-cancer diagnoses.

## Board of Directors

### Executive Committee

**Bob Newton**  
*Chair*

**Patrick Wright, MD**  
*Vice-Chair*

**Susan Shumaker**  
*Secretary/Treasurer*

**Carolynn Rice**

**Ralph Shelton**

**Larry Roland**  
*Immediate Past Chair*

**Terry Akin**

**Noel Burt**

**Dr. Howard Chubbs**

**Ross Harris**

**Karin Henderson**

**Ron Johnson**

**Ann Lineweaver**

**Mary Magrinat**

**David Marker**

**Everette Mills**

**Mohamed Mohamed, MD, PhD**

**Patricia Soenksen**

*President and CEO*

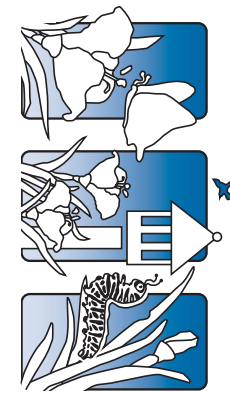


#### Mission Statement:

Hospice and Palliative Care of Greensboro enhances quality of life by providing expert interdisciplinary care, consultation, support and education for those affected by serious illness, death or grief.



HOSPICE and PALLIATIVE CARE  
of GREENSBORO



HOSPICE and PALLIATIVE CARE  
of GREENSBORO

2500 Summit Avenue, Greensboro, NC 27405  
(call) 336.621.2500 (fax) 336.621.4516  
www.hospicegso.org



TIME SENSITIVE MATERIAL

### Stay Connected with HPCG



Non-Profit Org.  
U.S. Postage  
PAID  
Permit No. 714  
Greensboro, NC

## ❖ HPCG Calendar of Events ❖

### Kids Path Programs

All groups are open to the public. Pre-registration is required. Call 336.544.5437 to register for a workshop or to schedule an individual counseling session.

**Support Groups:** (\$15.00 registration fee)

#### **Pathfinders**

Teens in 6th through 12th grade coping with the illness or death of a loved one.

Thursdays from 6:00-7:30pm

**More Dates Coming Soon.**

#### **Connecting Rainbows**

K-5th graders and their parents or caregivers coping with the illness or death of a loved one.

Tuesdays from 6:00-7:30pm

**More Dates Coming Soon.**

#### **SibShops**

For siblings of children with special needs. Please call Family Support Network at 832-6507 for dates, location, and to register.

**Camp:** (\$15.00 registration fee)

#### **CHAMP Camp - Children Healing And Making friends through Play**

Overnight grief camp for 2<sup>nd</sup> - 5<sup>th</sup> graders coping with the illness or death of a loved one.

The Summit Center at Haw River State Park

**May 14-15, 2011**

**Workshops:** (\$10.00 registration fee)

#### **Make-A-Memory-Bear**

Participants ages 5 and up create a unique bear out of an article of clothing that belonged to their loved one who died.

**Thursday, August 11, 2011 6:00 - 7:30pm**

### Counseling and Education Center

Held at HPCG campus 2500 Summit Avenue Greensboro, NC. All groups are open to the public free of charge. In order to join a group each potential group participant must pre-register and will be contacted by a group facilitator to schedule a required orientation session. Pre-registration options: Call Tammy Chaput at 336.621.5565 or email tchaput@hospicegso.org

#### **2011 Winter Support Groups for Bereaved Adults:**

**Loss of a Child\*** Begins May 10, 2011 from 5:30-6:45pm

For parents who have experienced the death of a child.

\*Meets at Kids Path building

**Loss of Spouse** Begins May 12, 2011 from 12:00-1:30pm

For adults who have experienced the death of their husband or wife.

**Loss of Loved One** Begins May 10, 2011 from 6:00-7:30pm

For adults who have experienced the death of a parent, sibling or other loved one.

**Loss of Constant Companion** Begins May 10, 2011 from 6:00-7:30pm

For adults who have experienced the death of their constant companion, life partner or spouse.

#### **"What Do I Say?" - A course in Talking About Death and Dying**

Friday, June 3, 2011, 8:30 am - 4:30 pm at Wesley Long Community Hospital  
501 N. Elam Avenue, Greensboro, NC (in classroom 1)

Registration options: [www.gahec.org/courses](http://www.gahec.org/courses) or call 336.832.8025.

(There is a charge for this course.)

### Volunteer Services

#### **Interested in becoming a volunteer with HPCG?**

Please register to attend a Volunteer Information Session. Contact Peggy Rich at 336.621.2500 or [prich@hospicegso.org](mailto:prich@hospicegso.org). Visit our website at [www.hospicegso.org](http://www.hospicegso.org). All groups are held at HPCG campus (2500 Summit Avenue, Greensboro, NC) unless noted.

Monday, May 16, 2011 from 6:00 pm to 8:00 pm

Monday, August 22, 2011 from 6:00 pm to 8:00 pm

Monday, October 10, 2011 from 6:00 pm to 8:00 pm

#### TO OUR READERS:

This quarterly publication is also available in an electronic format. Please visit our web site at [www.hospicegso.org](http://www.hospicegso.org) to sign up to receive this e-newsletter.